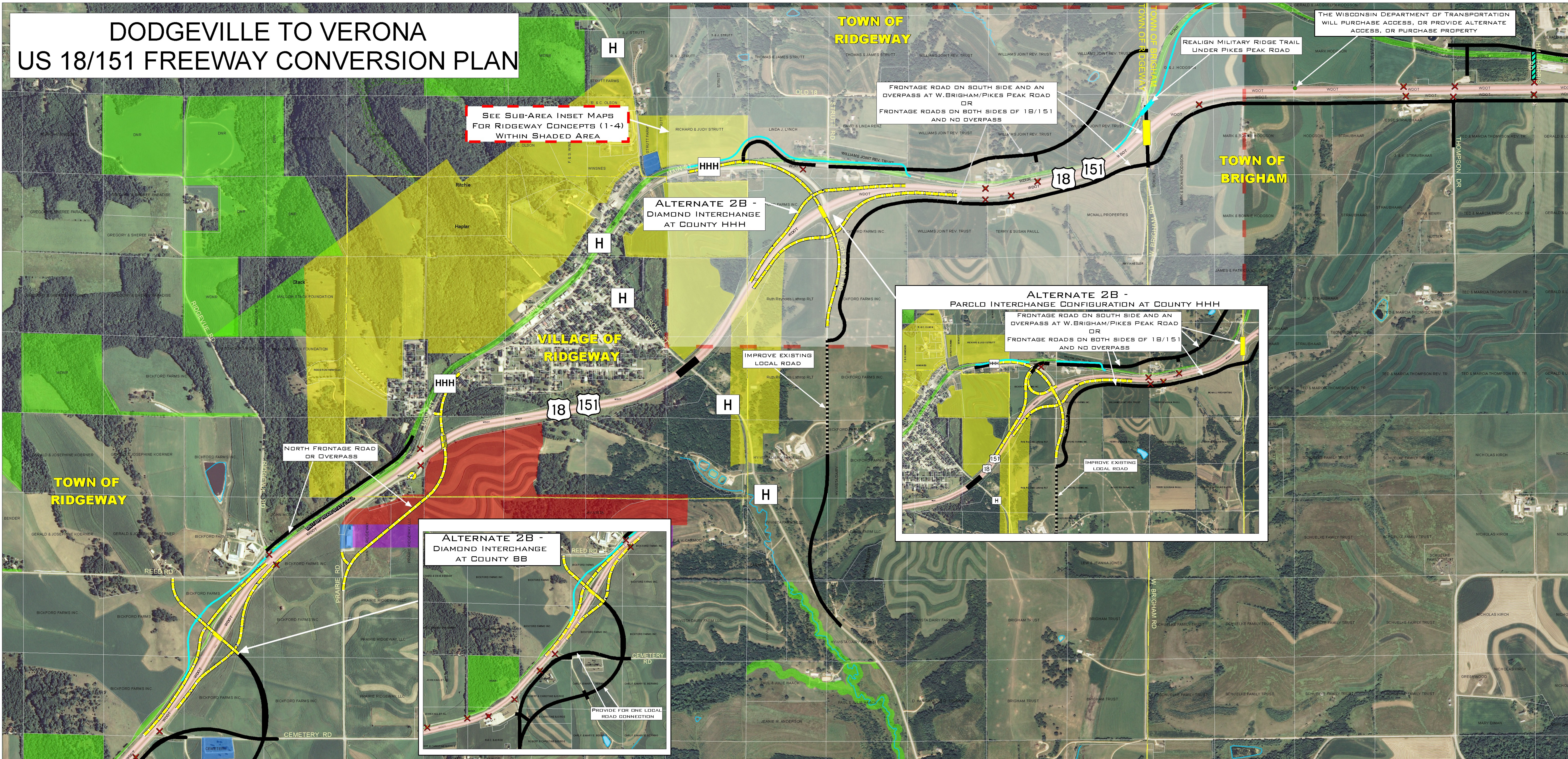


DODGEVILLE TO VERONA US 18/151 FREEWAY CONVERSION PLAN



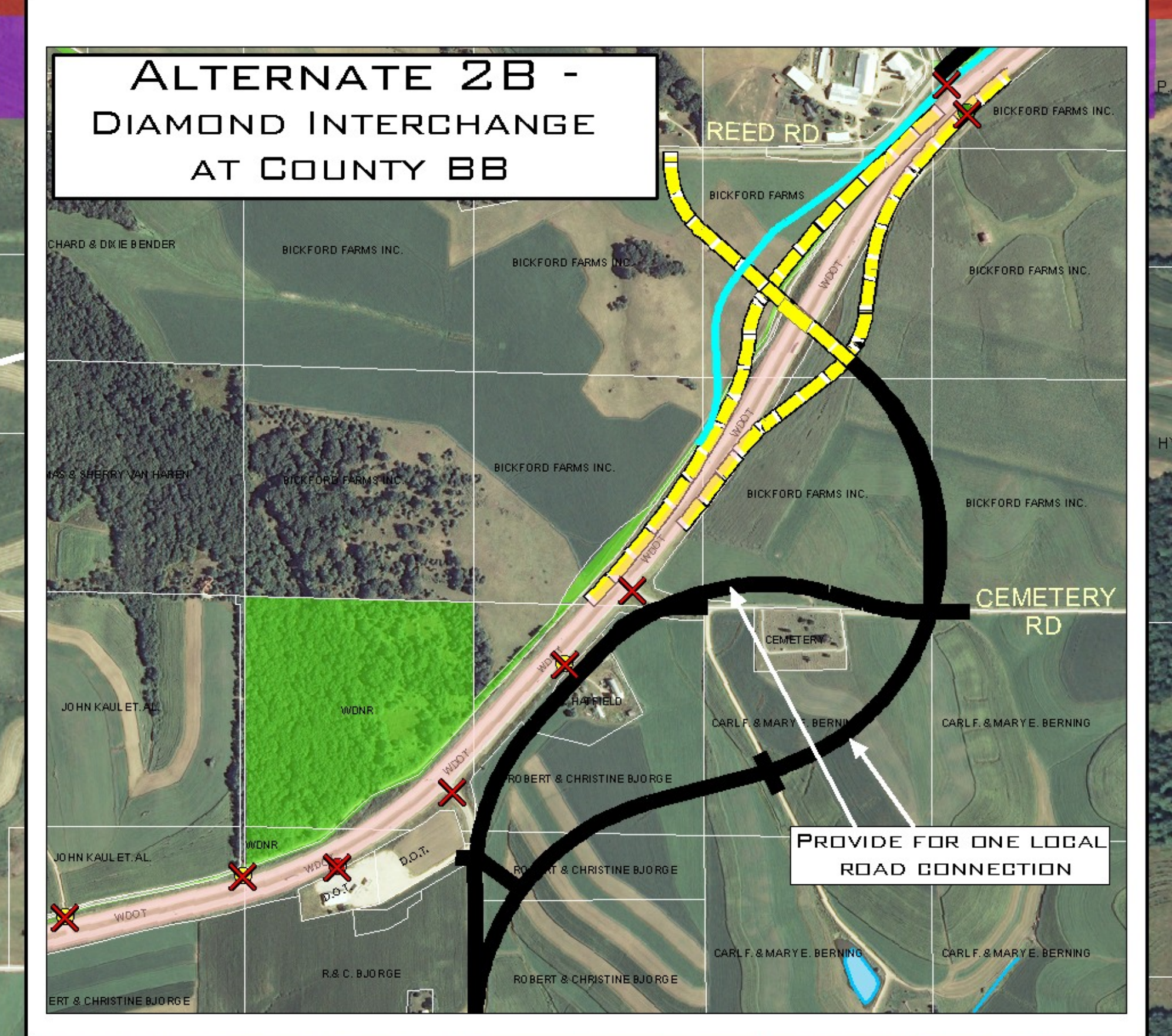
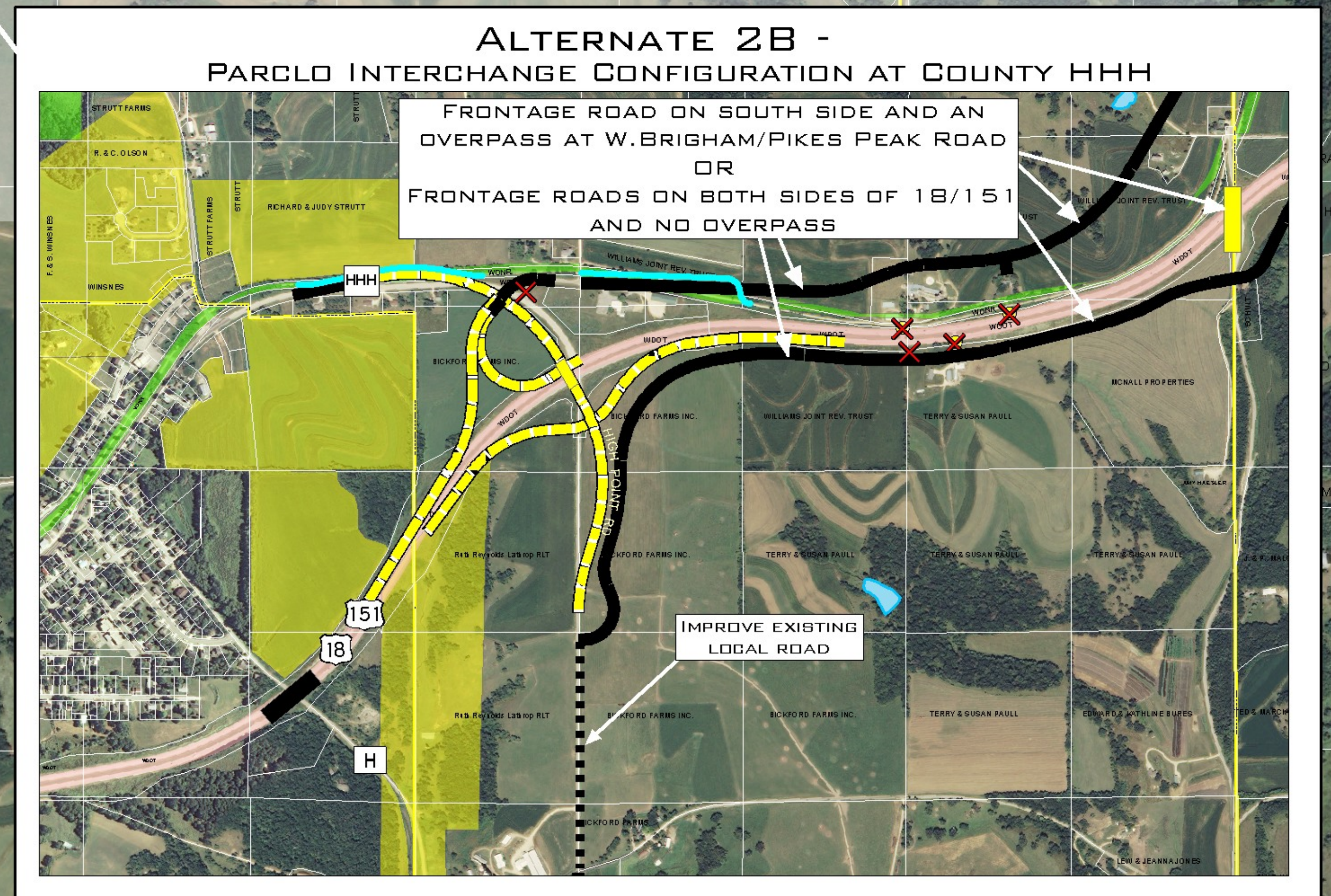
SEE SUB-AREA INSET MAPS FOR RIDGEWAY CONCEPTS (1-4) WITHIN SHADED AREA

FRONTAGE ROAD ON SOUTH SIDE AND AN OVERPASS AT W. BRIGHAM/PIKES PEAK ROAD OR FRONTAGE ROADS ON BOTH SIDES OF 18/151 AND NO OVERPASS

REALIGN MILITARY RIDGE TRAIL UNDER PIKES PEAK ROAD

THE WISCONSIN DEPARTMENT OF TRANSPORTATION WILL PURCHASE ACCESS, OR PROVIDE ALTERNATE ACCESS, OR PURCHASE PROPERTY

ALTERNATE 2B - DIAMOND INTERCHANGE AT COUNTY HHH



2008 Orthophotography provided by National Agricultural Imagery Program (NAIP). Municipal Boundaries and Parcels provided by Iowa County. Land Use provided by Southwestern Wisconsin Regional Planning Commission.

| Legend | | | |
|--------|--|--|----------------------|
| | Interchange/Overpass Concept | | Acquisition |
| | Alternate Interchange/Overpass Concept | | Water |
| | Potential Grade Separation | | Access Removal |
| | Potential Local Road Connection | | Residential |
| | Improve Existing Local Road | | Public/Institutional |
| | Existing Grade Separation | | Park/Managed Lands |
| | Dead-end/cul-de-sac | | Agriculture |
| | New Driveway | | Commercial |
| | | | Wetlands |



Section 2
Alternative 2B - Preferred Alternative
DRAFT CONCEPT
as of 2/13/09

